

EL Alfabeto

Aa



abeja

Bb



ballena

Cc



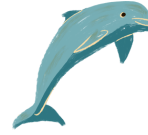
calabaza

Ch ch



chile

Dd



delfín

Ee



elefante

Ff



futbol

Gg



gato

Hh



huevo

Ii



isla

Jj



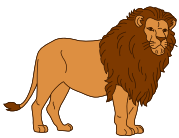
jirafa

Kk



koala

Ll



leon

Ll



llave

Mm



manzana

Nn



naranja

Nñ



niño

Oo



oso

Pp



pastel

Qq



queso

Rr



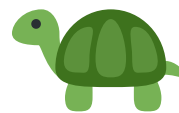
ratón

Ss



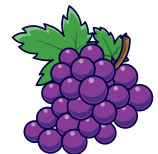
silla

Tt



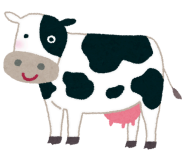
tortuga

Uu



uvas

Vv



vaca

Ww



wafle

Xx



xilófono

Yy



yoga

Zz



zanahoria